

SERIES RR 3112 SWITCHES

ROCKER SWITCHES



E-SWITCH®



SPECIFICATIONS

Contact Rating:	16A @ 125VAC 10A @ 250VAC
Life Expectancy (Mechanical):	20,000 cycles
Life Expectancy (Electrical):	6,000 cycles
Contact Resistance:	50 mΩ (Initial)
Insulation Resistance:	100M Ω @ 500V DC
Dielectric Strength:	1,500V Minimum (1 minute)
Operating Temp:	0°C to 65°C

FEATURES & BENEFITS

- ▶ Ergonomic feel
- ▶ Visually appealing
- ▶ Multiple options

APPLICATIONS/MARKETS

- ▶ Industrial
- ▶ Audio/visual
- ▶ Lighting ballast



HOW TO ORDER

SERIES	MODEL NO.	CIRCUIT	HOUSING COLOR	ACTUATOR COLOR	LED COLOR	MARKING	TERMINATION	LAMP
RR	3112	See Below	BLK = Black WHT = White	BLK = Black WHT = White RED = Red YEL = Yellow GRN = Green	N = None RED = Red YEL = Yellow GRN = Green	A B E F G I	F = Faston	0 = None 1 = 110V Neon 2 = 220V Neon 3 = 3V LED 4 = 12V LED 5 = 24V LED
CIRCUIT CODE: A = SPST On-None-Off B* = SPST On-None-Off C = SPDT On-None-On D = SPDT On-Off-On F = SPST Off-None-(On) L* = SPST On-None-Off								



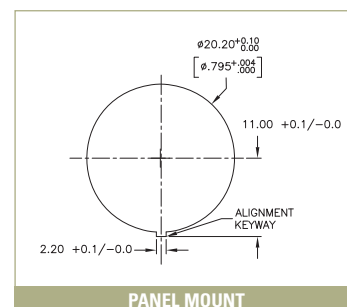
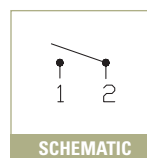
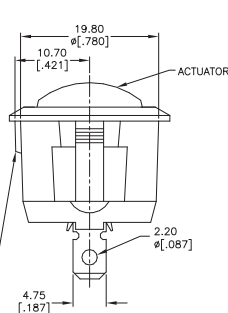
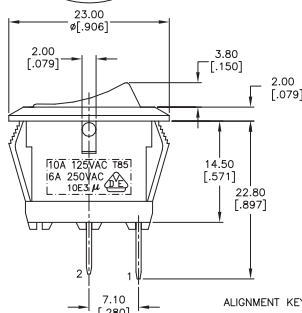
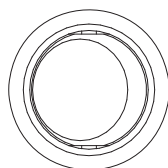
Example Ordering Number

RR-3112-D-BLK-RED-A-F-3

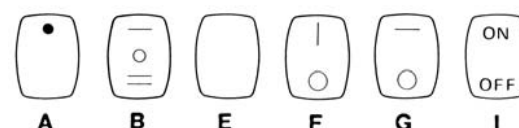
*** Note:**
B has NEON wired inline
L has LED wired separate

Specifications subject to change without notice.

RR 3112



MARKING OPTIONS



TACT
SWITCHES

NAVIGATION
SWITCHES

PUSHBUTTON
SWITCHES

TOGGLE
SWITCHES

ROCKER
SWITCHES

SLIDE
SWITCHES

SNAP-ACTION
SWITCHES

DIP
SWITCHES

KEYLOCK
SWITCHES

ROTARY
SWITCHES

DETECTOR
SWITCHES

CAP
OPTIONS