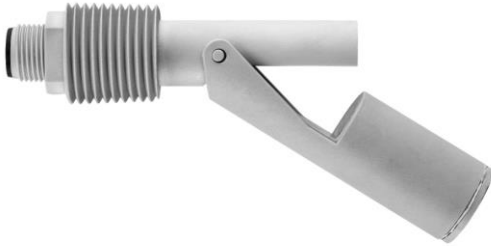


Datasheet

RS Stock No. 1242588

RS Pro Compact External Fitting ½" NPT Float Switch

The RSF80 series are designed for mounting through the wall of a tank, via ½" NPT thread without requiring access to the inside of the tank.

Typical applications include diesel generators, hydraulic oil and gearbox oil levels.

They are manufactured in a range of plastics to suit most commonly used liquids.

The switch can be fitted to achieve either make on rise (N/O) or make on fall (N/C) action by simply rotating through 180°.

Available with either flying leads or M12 circular connector socket. Cables are available for use with M12 connector versions.

MPN: RSF87HP

Material: Polyvinylidene Fluoride (PVDF)

Max Power: 100 VA

Leadouts: M12 Connection

Approvals: UL (Pending)

Technical Specification

Material: Polyvinylidene Fluoride (PVDF)

Colour: Green

Temp Range °C: -10 to +105

Min Fluid SG: 0.85

Must Close Level (SG=1): 9 mm

Must Open Level (SG=1): 24 mm

Electrical Specification

Contact Form: N/O (N/C)

Switching Power Max: 100 VA

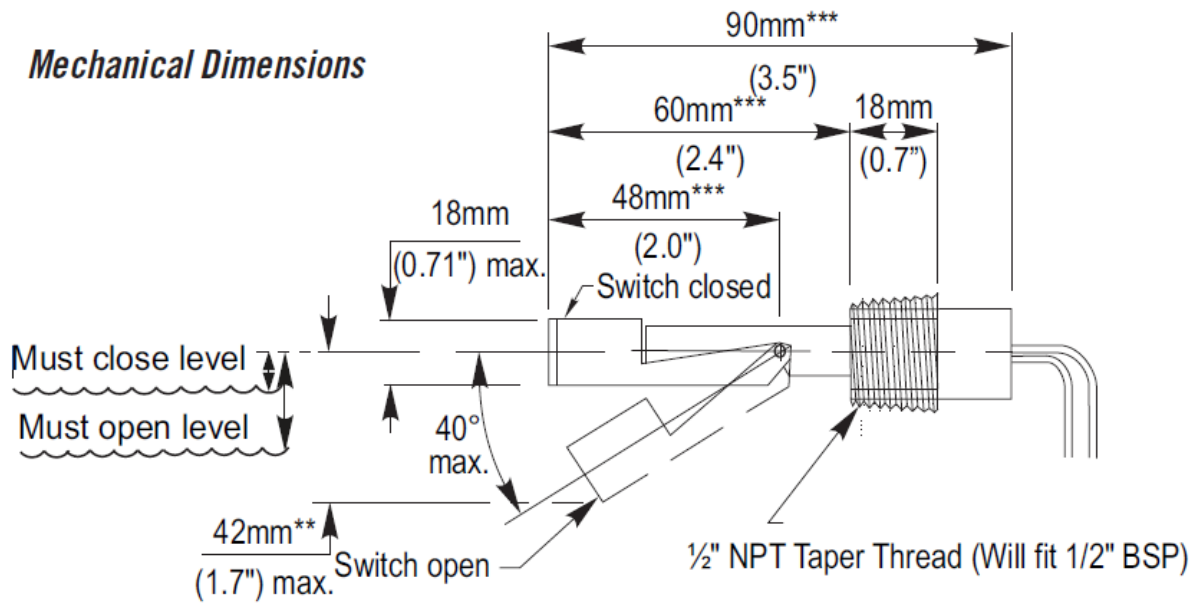
Switching Voltage AC Max: 300 V

Switching Voltage DC Max: 300 V

Switching Current Max: 1 A

Note: All ratings are for RESISTIVE LOADS ONLY

Mechanical Dimensions



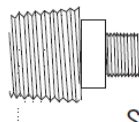
** 49mm RSF86 & RSF87

*** Add 10mm to dims, RSF86 & RSF87



Made in the UK

M12 connection version



Switch on pins 1 & 2