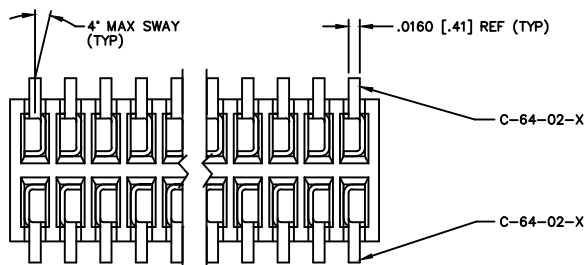
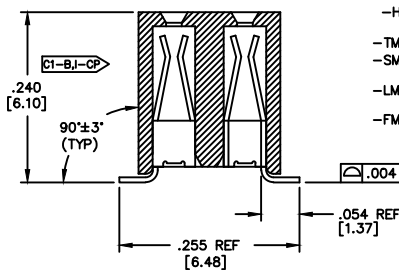
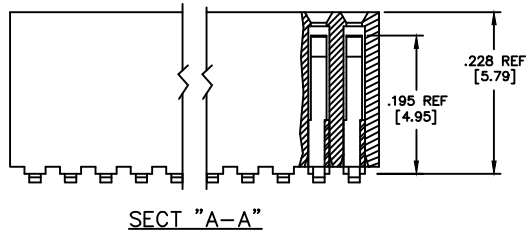
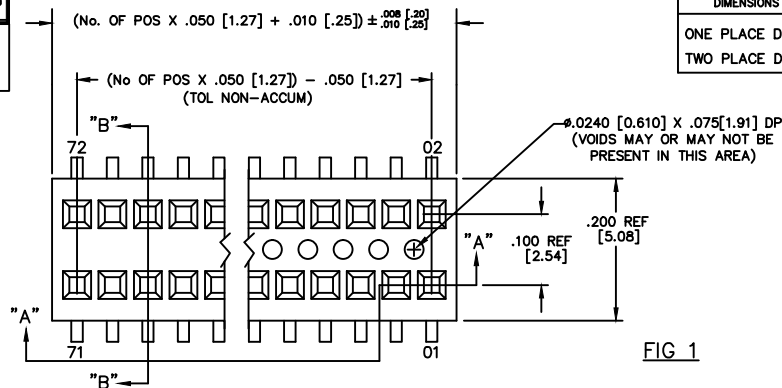


REVISION AS

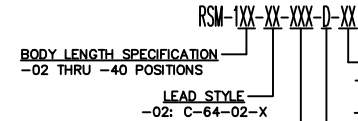
DO NOT SCALE FROM THIS PRINT

DIMENSIONS ARE IN INCHES		UNLESS OTHERWISE NOTED	TOLERANCES ARE:
ONE PLACE DECIMALS: ± .1	THREE PLACE DECIMALS: ± .005	ANGLES	± 5°
TWO PLACE DECIMALS: ± .01	FOUR PLACE DECIMALS: ± .0020		

TITLE: RECEPTACLE SURFACE MOUNT (DOUBLE ROW)	DWG NO: RSM-1XX-XX-XXX-D-XX
	SHEET 1 OF 2



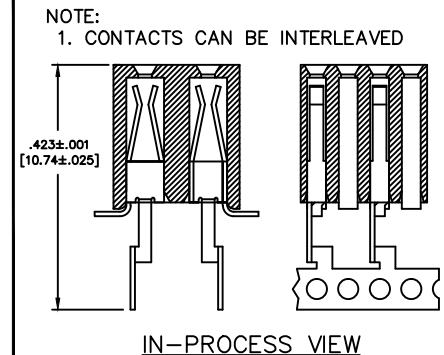
1. WILL LOSE A POSITION FOR EVERY CUT MADE ON A SOCKET STRIP; CUT FLASH TO BE .010 [.25] MAX WITH NO FLASH ALLOWED IN HOLES OR EXTENDING BELOW LEADS.
2. C1 REPRESENTS A CRITICAL DIMENSION.
3. MINIMUM RETENTION FORCE: 1.0 LB.
4. DUE TO THE HIGH AMOUNT OF INSERTION FORCE NEEDED, THE -LC OPTION IS NOT COMPATIBLE WITH AUTO PLACEMENT. SAMTEC RECOMMENDS MANUAL PLACEMENT FOR ALL ASSEMBLIES WITH THE -LC OPTION.
5. INSULATOR MATERIAL: LCP, UL 94 VO



- PLATING SPECIFICATIONS**
- S: 30μ" SELECTIVE GOLD IN CONTACT AREA MATTE TIN ON TAIL
  - F: 3 FLASH SELECTIVE GOLD IN CONTACT AREA MATTE TIN ON TAIL
  - L: 10μ" LIGHT SELECTIVE GOLD IN CONTACT AREA MATTE TIN ON TAIL
  - T: MATTE TIN CONTACT AND TAIL
  - STL: 30μ" SELECTIVE GOLD IN CONTACT AREA TIN/LEAD (90%/10 +/-5%) TAIL
  - H: 30μ" HEAVY GOLD IN CONTACT AREA 3 ON TAIL
  - TM: MATTE TIN CONTACT AND TAIL
  - SM: 30μ" SELECTIVE GOLD IN CONTACT AREA MATTE TIN ON TAIL
  - LM: 10μ" LIGHT SELECTIVE GOLD IN CONTACT AREA MATTE TIN ON TAIL
  - FM: 3μ" FLASH SELECTIVE GOLD IN CONTACT AREA MATTE TIN ON TAIL

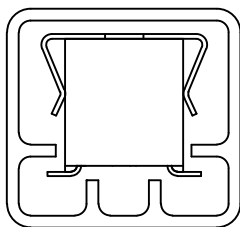
- OPTIONS**
- LC: LOCKING CLIP (USE LC-05-TM)(SEE FIG 2, SHT 2)(SEE NOTE 4)
  - P: PICK AND PLACE PAD (AVAILABLE ON POS. 5 THRU 40 ONLY) (USE LMP-02)(SEE FIG 3, SHT 2)
  - K: POLYAMIDE FILM PAD (AVAILABLE ON POS. 5 THRU 40 ONLY) (.005 [.13] THICKNESS WITH SILICONE ADHESIVE)(SEE FIG 4, SHT 2) (USE K-500-300)
  - TR: TAPE & REEL
- BODY SPECIFICATION**
- D: DOUBLE ROW (USE RSM-XX-D)

CRITICAL DIMENSION INSPECTION TABLE	
ASSEMBLY OPERATION	IN-PROCESS INSPECTION
BREAK CARRIER	C1
ROTARY CUT	C2

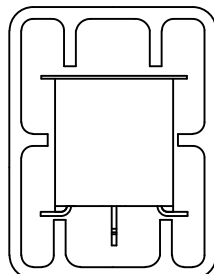


PACKAGING

- NOTES:
1. 1<sup>st</sup> POSITION TO BE LOADED IN TUBE IN THE DIRECTION OF THE ARROW.
  2. LAYER PACKAGE POSITIONS 2-4, TUBE PACKAGE POSITIONS 5-36
  3. ENDWALLS TO BE .020±.003"



PT-1-24-05-38



PT-1-24-04-64

TABLE 1		
OPTION	TUBE	PLUG
-K, -LC, -K-LC	PT-1-24-04-64	TP-03
NONE, -P, -P-LC	PT-1-24-05-38	TP-09

**samtec**

520 PARK EAST BLVD. NEW ALBANY, INDIANA 47150  
PHONE (812) 944-6733 P.O. BOX 1147  
CODE 55322

MADE BY: GREG REIDINGER 11-24-92 RSM-1XX-XX-XXX-D-XX SHEET 1 OF 2

PROPRIETARY NOTE

THIS DOCUMENT CONTAINS INFORMATION CONFIDENTIAL AND PROPRIETARY TO SAMTEC INC. AND SHALL NOT BE REPRODUCED OR TRANSFERRED TO OTHER DOCUMENTS OR DISCLOSED TO OTHERS OR USED FOR ANY PURPOSE OTHER THAN THAT FOR WHICH IT WAS OBTAINED WITHOUT THE EXPRESSED WRITTEN CONSENT OF SAMTEC INC.

EXISPROD\ASSEMBLY\050 RSM-DASM

REV. AS

UNLESS OTHERWISE NOTED  
 DIMENSIONS ARE IN INCHES  
 TOLERANCES ARE:  
 ONE PLACE DECIMALS: ± .1  
 TWO PLACE DECIMALS: ± .01  
 THREE PLACE DECIMALS: ± .005  
 FOUR PLACE DECIMALS: ± .0020  
 ANGLES  
 ± 5°

TITLE: RECEPTACLE SURFACE MOUNT (DOUBLE ROW)  
 DWG NO: RSM-1XX-XX-XXX-D-XX  
 SHEET 2 OF 2

FIG. 2  
 -LC: LOCKING CLIP

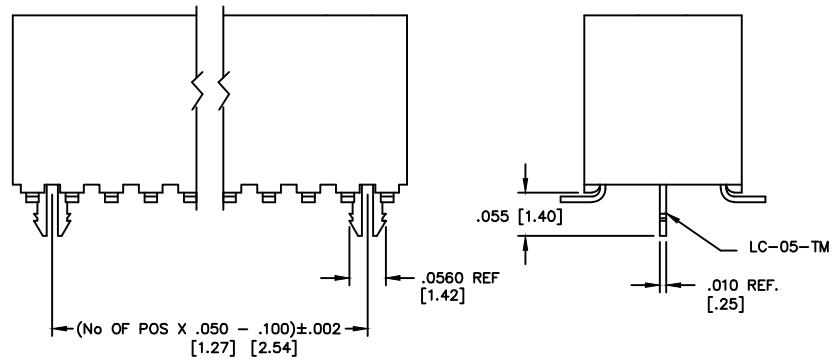
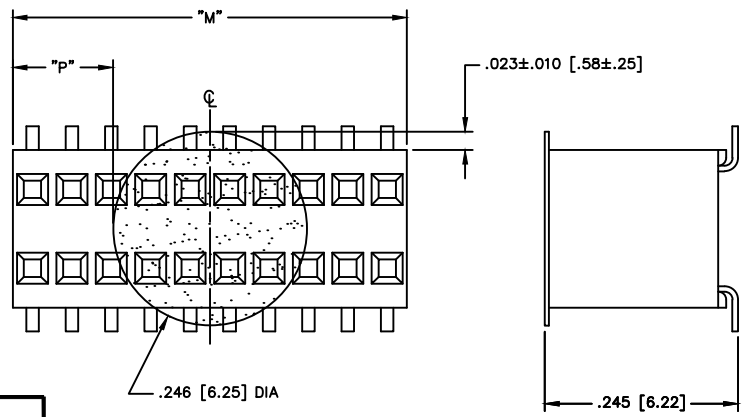
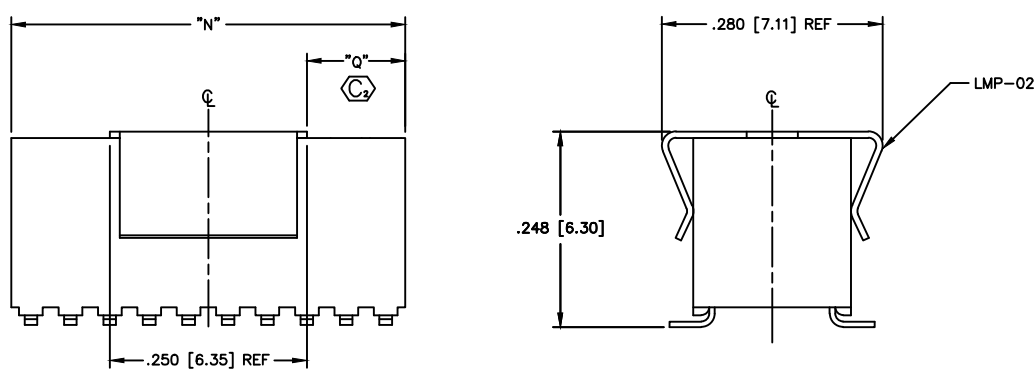


FIG. 4  
 -K: POLYIMIDE FILM PAD  
 (AVAILABLE ON POS 5 - 50 ONLY)



NOTE: "M" = USE MEASURED DIMENSION (REF)  
 "P" = {( "M" - .246 [6.25] ) / 2 } ± .020 [0.51]

FIG. 3  
 -P: PICK AND PLACE PAD  
 (AVAILABLE ON POS 5 - 50 ONLY)



NOTE: "N" = USE MEASURED DIMENSION (REF)  
 "Q" = {( "N" - .250 [6.35] ) / 2 } ± .020 [0.51]

**PROPRIETARY NOTE**  
 THIS DOCUMENT CONTAINS INFORMATION CONFIDENTIAL AND PROPRIETARY TO SAMTEC INC. AND SHALL NOT BE REPRODUCED OR TRANSFERRED TO OTHER DOCUMENTS OR DISCLOSED TO OTHERS OR USED FOR ANY PURPOSE OTHER THAN THAT FOR WHICH IT WAS OBTAINED WITHOUT THE EXPRESSED WRITTEN CONSENT OF SAMTEC INC.

EXISPROD\ASSEMBLY\050 RSM DASM2

**samtec**

520 PARK EAST BLVD. NEW ALBANY, INDIANA 47150  
 PHONE (812) 944-6733 P.O. BOX 1147  
 CODE 55322

MADE BY: GREG REIDINGER 11-24-92  
 CHECKED BY:

APPROVAL

RSM-1XX-XX-XXX-D-XX  
 SHEET 2 OF 2