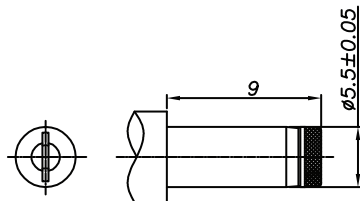
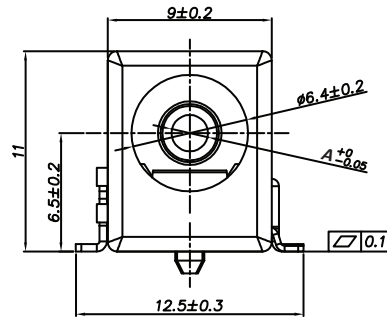
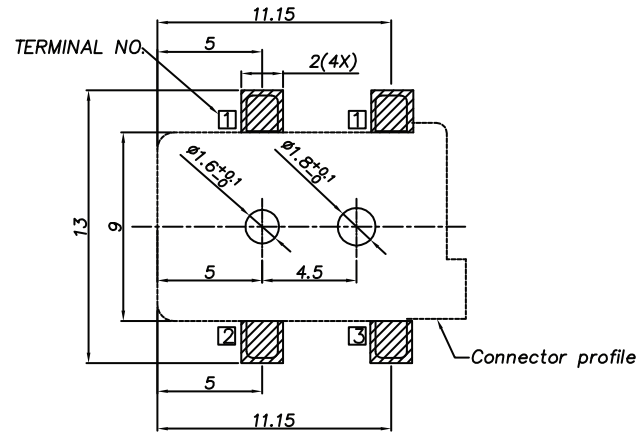


□ : TERMINAL NO.



DC MATE PLUG



PCB LAYOUT - COMPONENT VIEW  
TOLERANCE ± 0.05

#### TECHNICAL CHARACTERISTICS

**MATERIAL**  
 INSULATOR: PA 9T  
 FLAMMABILITY RATING: UL94-V0  
 COLOR: BLACK  
 CONTACT MATERIAL: COPPER ALLOY  
 CONTACT TYPE: STAMPED  
**PLATING:**  
 - CENTER PIN: GOLD  
 - CENTER PIN TERMINAL: TIN  
 - SHUNT TERMINAL: TIN  
 - TIP SPRING: TIN  
 QUALITY CLASS: 5000 MATING CYLCES

**ENVIRONMENTAL**  
 OPERATING TEMPERATURE: -40°C UP TO +85°C  
 COMPLIANCE: LEAD FREE AND ROHS

**ELECTRICAL**  
 CURRENT RATING: 5A  
 WORKING VOLTAGE: 24 V DC  
 INSULATION RESISTANCE: >100 MΩ  
 DIELECTRIC WITHSTANDING VOLTAGE: 500 VAC/MIN  
 CONTACT RESISTANCE: 50 mΩ max

**STANDARD**  
 RoHS CERTIFIED: E323964

**SOLDERING**  
 JEDEC LEAD FREE REFLOW SOLDERING PROCESS

**PACKAGING**  
 TAPE & REEL

Ø A	2.0	2.5
XX	06	08
PLUG INNER Ø	2.05 <sup>+0.10</sup> <sub>-0.00</sub>	2.55 <sup>+0.10</sup> <sub>-0.00</sub>
PLUG OUTER Ø	5.5±0.05	5.5±0.05

RoHS Compliant			
G			
F			
E			
D			
C			
B	02-NOV-15	CERTIFICATION	AK
A	29-OCT-14	PDF	AS
REV	DATE	FILE	BY

PROJECTION:



APPROVAL: JTs

GENERAL TOLERANCE  
 X = <sup>+/-</sup> 0.50  
 .X = <sup>+/-</sup> 0.30  
 .XX = <sup>+/-</sup> 0.20

UNIT: MM

SCALE:

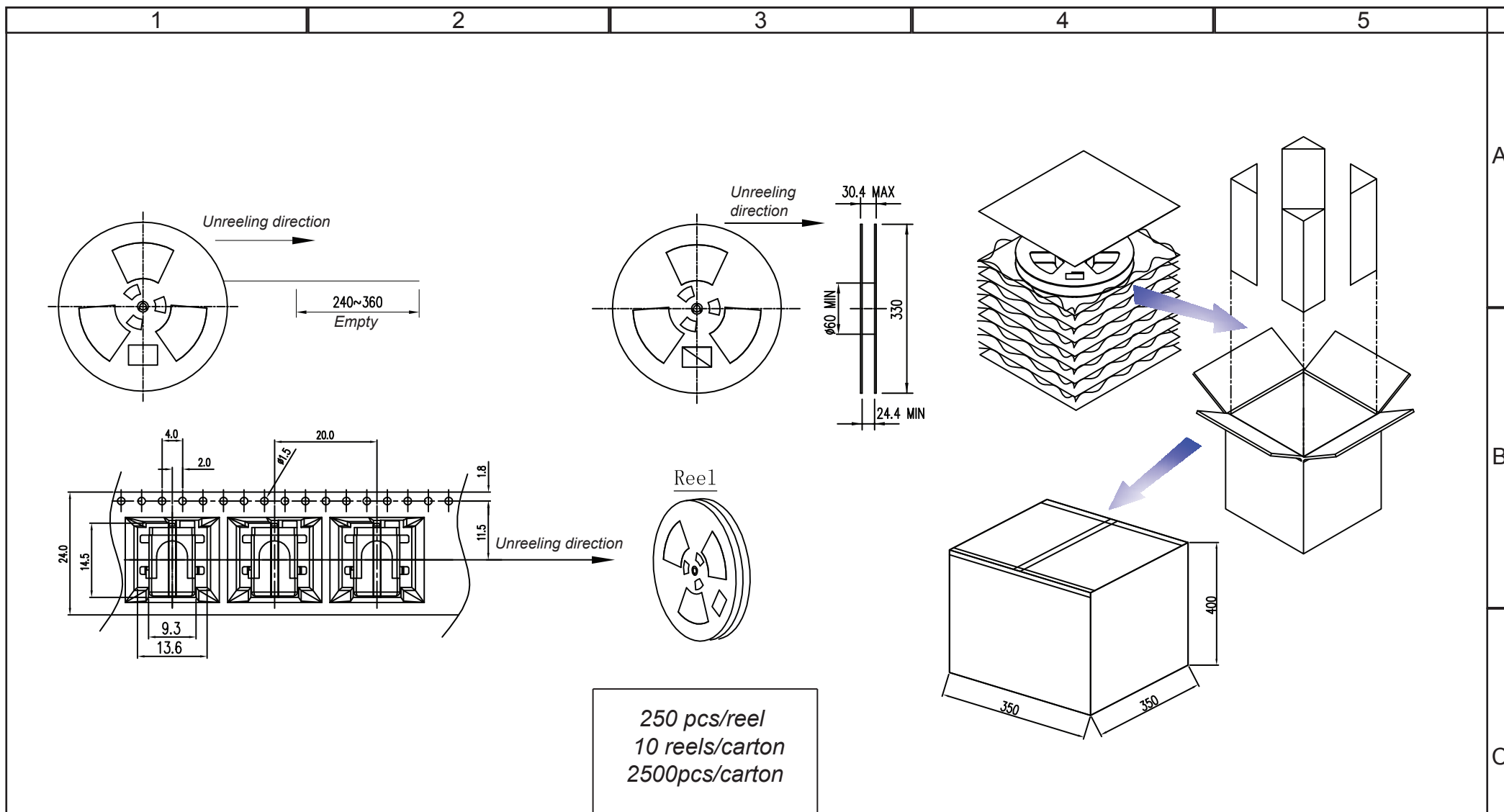
SHEET: 1/3

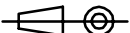

DRAW: AS



DESCRIPTION: DC POWER JACK - RIGHT ANGLED - SMT - Ø 2.0 & 2.5 -WR-DC  
 WERI PART NO: 694 1xx 106 102

SIZE  
**A4**



RoHS Compliant				<div>PROJECTION:</div> <div></div>	<div>GENERAL TOLERANCE</div> <div>.X = <math>\pm</math> 0.2</div> <div>.XX = <math>\pm</math> 0.15</div>	<div></div> <div>WÜRTH ELEKTRONIK</div>	<div>DESCRIPTION: DC POWER JACK - RIGHT ANGLED - SMT - Ø 2.0 &amp; 2.5 -WR-DC</div> <div>SIZE</div> <div>A4</div>
G							
F							
E							
D							
C				APPROVAL: JTs	UNIT: MM	<div>WERI PART NO: 694 1xx 106 102</div>	
B					SCALE:		
A	29-OCT-14	PDF	AS		SHEET: 2/3		
REV	DATE	FILE	BY		DRAW: AS		

[illegible]

# Mouser Electronics

Authorized Distributor

Click to View Pricing, Inventory, Delivery & Lifecycle Information:

[Würth Electronics:](#)

[694106106102](#) [694108106102](#) [694001](#)