



FCIconnect.com

Copyright FCI.

Configuration of Documents

P/N	Documents	No.	Title	CAT.No.
SFW_S-25T(M)E1	Specification Connector dwg.	SC-SFWS01	CAT.NO.TABLE FOR 1mm SPACING SMT CONNECTOR	SFW_S-25T__
		JSAG3342	1mm SPACING SURFACE MOUNT FPC/FFC CONNECTOR	SFW_S-25T__
		JSAG3579	1mm SPACING SURFACE MOUNT FPC/FFC CONNECTOR	SFW_S-25T__
		JSAG3836	CAT. NO. TABLE FOR PLASTIC TAPE PACKAGED 1mm SPACING SMT CONN.	SFW_S-25T_E1
		JSAG3343	PLASTIC TAPE PACKAGED 1mm SPACING SMT CONNECTOR	SFW_S-25T_E1
		JSAG3338	RECOMMENDED CABLE	SFW_S-25T__
SFW_S-65T(M)E1	Cable dwg.	JSAG3340	RECOMMENDED CABLE	SFW_S-25T__
	Manual	JSAG3341		SFW_S-25T__
		BJM-SFWS101		
	Specification Connector dwg.	SC-SFWS02	CAT.NO.TABLE FOR 1mm SPACING SMT CONNECTOR	SFW_S-65T__
		JSAG3900	1mm SPACING SURFACE MOUNT CFC CONNECTOR	SFW_S-65T__
		JSAG3905	1mm SPACING SURFACE MOUNT CFC CONNECTOR	SFW_S-65T__
SFW_S-25T(M)E1LF	Cable dwg.	JSAG3901	CAT. NO. TABLE FOR PLASTIC TAPE PACKAGED 1mm SPACING SMT CONN.	SFW_S-65T_E1
	Manual	JSAG3902	PLASTIC TAPE PACKAGED 1mm SPACING SMT CONNECTOR	SFW_S-65T_E1
		JSAG3903	RECOMMENDED CABLE	SFW_S-65T__
		JSAG3904		
	Specification Connector dwg.	SC-SFWS03	CAT.NO.TABLE FOR 1mm SPACING SMT CONNECTOR	SFW_S-25T__LF
		JSAG6516	1mm SPACING SURFACE MOUNT FPC/FFC CONNECTOR	SFW_S-25T__LF
SFW_S-65T(M)E1LF	Cable dwg.	JSAG6517	CAT. NO. TABLE FOR PLASTIC TAPE PACKAGED 1mm SPACING SMT CONN.	SFW_S-25T_E1LF
	Manual	JSAG6518	PLASTIC TAPE PACKAGED 1mm SPACING SMT CONNECTOR	SFW_S-25T_E1LF
		JSAG6519	RECOMMENDED CABLE	SFW_S-25T__LF
		JSAG6520	RECOMMENDED CABLE	SFW_S-25T__LF
		JSAG3340		
		JSAG3341		
SFW_S-65T(M)E1LF	Specification Connector dwg.	SC-SFWS04	CAT. NO. TABLE FOR 1mm SPACING SMT CONNECTOR	SFW_S-65T__LF
		JSAG6521	1mm SPACING SURFACE MOUNT CFC CONNECTOR	SFW_S-65T__LF
		JSAG6522	1mm SPACING SURFACE MOUNT CFC CONNECTOR	SFW_S-65T__LF
		JSAG6523	CAT. NO. TABLE FOR PLASTIC TAPE PACKAGED 1mm SPACING SMT CONN.	SFW_S-65T_E1LF
		JSAG6524	PLASTIC TAPE PACKAGED 1mm SPACING SMT CONNECTOR	SFW_S-65T_E1LF
		JSAG6525	RECOMMENDED CABLE	SFW_S-65T__LF

mat'l. code				surface 58 / tolerance ISO 1302 / ISO 406 / ISO 1101		projection		product family 58SF		CODE JP	
ltr		ecn no		dr		date		title		SFW_S Documents Configuration (1mm Spacing connector)	
A		J05-0334		H.T		6/3/'05		mm			
B		J05-0377		H.T		6/22/'05		scale			
C		J06-0430		H.T		10/19/'06		F			
				dr		10/19/06				sheet 1 of 1	
				engr		10/19/06				size A4	
				chr		10/19/06					
				appd		10/20/06					
sheet index		revision sheet		C		1				Rev. C	

form: A4

PDM: Rev:C

STATUS:Released

Printed: Feb 09, 2010

CAT. NO. & DIMENSIONS

NOTE3	NO. OF CONTACTS (n)	CAT. NO.	DIMENSIONS (NOTE2)		
			A ±0.2	B ±0.2	C ±0.2
	4	SFW4S-2ST__LF	10.4	5.24	3
	5	SFW5S-2ST__LF	11.4	6.24	4
	6	SFW6S-2ST__LF	12.4	7.24	5
*	7	SFW7S-2ST__LF	13.4	8.24	6
	8	SFW8S-2ST__LF	14.4	9.24	7
*	9	SFW9S-2ST__LF	15.4	10.24	8
	10	SFW10S-2ST__LF	16.4	11.24	9
	11	SFW11S-2ST__LF	17.4	12.24	10
*	12	SFW12S-2ST__LF	18.4	13.24	11
	13	SFW13S-2ST__LF	19.4	14.24	12
	14	SFW14S-2ST__LF	20.4	15.24	13
	15	SFW15S-2ST__LF	21.4	16.24	14
	16	SFW16S-2ST__LF	22.4	17.24	15
	17	SFW17S-2ST__LF	23.4	18.24	16
*	18	SFW18S-2ST__LF	24.4	19.24	17
*	19	SFW19S-2ST__LF	25.4	20.24	18
	20	SFW20S-2ST__LF	26.4	21.24	19
*	21	SFW21S-2ST__LF	27.4	22.24	20
	22	SFW22S-2ST__LF	28.4	23.24	21
	23	SFW23S-2ST__LF	29.4	24.24	22
	24	SFW24S-2ST__LF	30.4	25.24	23
*	25	SFW25S-2ST__LF	31.4	26.24	24
*	26	SFW26S-2ST__LF	32.4	27.24	25
	27	SFW27S-2ST__LF	33.4	28.24	26
	28	SFW28S-2ST__LF	34.4	29.24	27
	29	SFW29S-2ST__LF	35.4	30.24	28
	30	SFW30S-2ST__LF	36.4	31.24	29
*	31	SFW31S-2ST__LF	37.4	32.24	30
*	32	SFW32S-2ST__LF	38.4	33.24	31

CAT. NO. SFW (n) S - 2 ST__ LF

SERIES

NO. OF CONTACTS

STRAIGHT TYPE

FOR FPC / FFC

VARIATION

STM : FOR AUTOMATIC MOUNTING (SMT)
WITH MOUNTING PLATE

ST : FOR AUTOMATIC MOUNTING (SMT)
WITHOUT MOUNTING PLATE

PACKAGE STYLE

LEAD FREE

NOTES

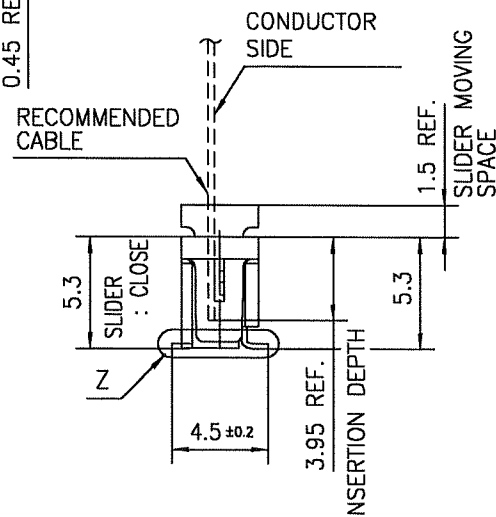
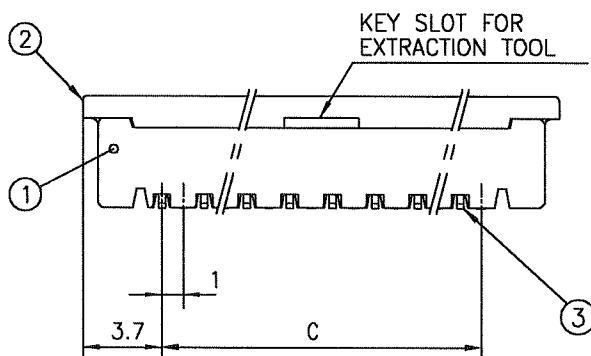
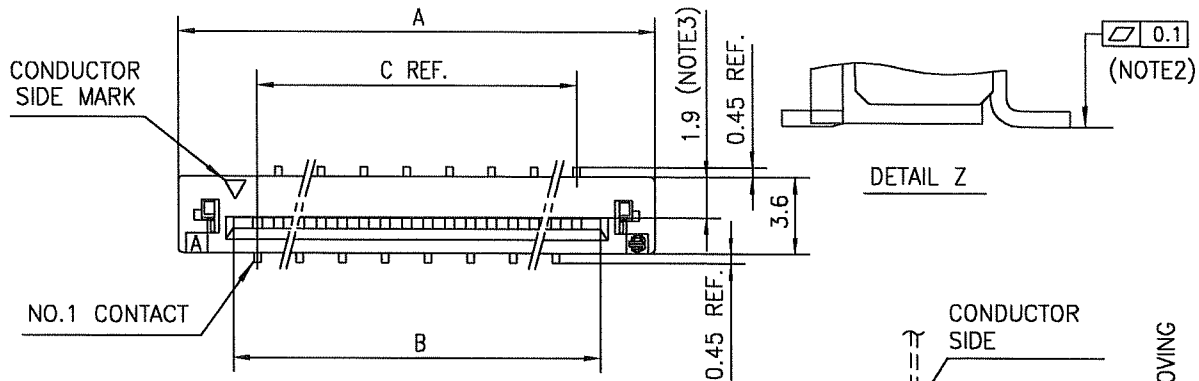
- THIS PRODUCT IS THE CONNECTOR, DESIGNED TO TERMINATE FPC/FFC AND COPER WITH AUTOMATIC MOUNTING (SMT).
- SEE PART DRAWINGS FOR DIMENSIONS A.B.C.
- PLEASE CONSULT US IN CASE OF USING PARTS WITH * MARK

mat'l. code				surface 58 / tolerance ISO 1302 ✓ ISO 406 ISO 1101		projection		product family 58SF		CODE JP	
ltr	ecn no	dr	date	tolerances unless otherwise specified		mm		title CAT. NO. TABLE FOR 1mm SPACING SMT CONNECTOR (CAT.No.SFW__S-2ST__LF)			
A	J05-0377	H.T	2005-6-22	angles	linear						
B	J05-0547	H.T	2005-8-30			scale X		dwg no sheet 1 of 1 size JSA 96516 A4			
C	J06-0430	H.T	2006-10-19								
D	J07-0407	H.T	2007-8-9	dr	engr	FCI		type Product Customer Drawing			
				chr	appd						
sheet index	revision	D	1								Rev. D

SC-SFWS 03 JSA96517 96518 96519 96520 93340 93341
form: A4

1

2



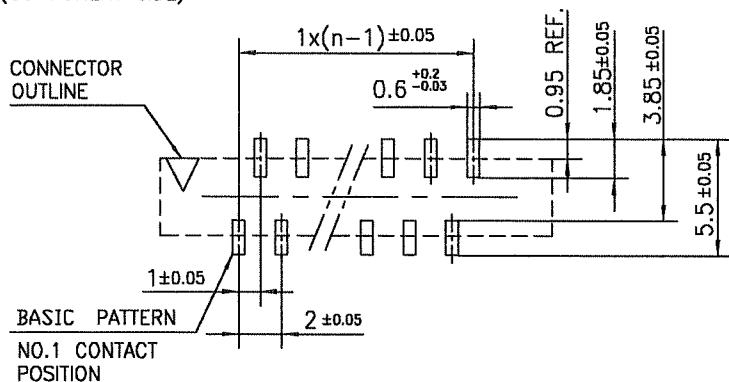
PT. NO.	PARTS NAME	MATERIAL	Q'TY	NOTE
1	HOUSING	GLASS FILLED THERMOPLASTIC RATED. (UL94V-0)	1	COLOR : BROWN
2	SLIDER	GLASS FILLED THERMOPLASTIC RATED. (UL94V-0)	1	COLOR : BLACK
3	CONTACT	PHOSPHOR BRONZE	n	PLATING : TIN Ni UNDER PLATED(LEAD FREE)

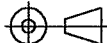
n : NO. OF CONTACTS

NOTES

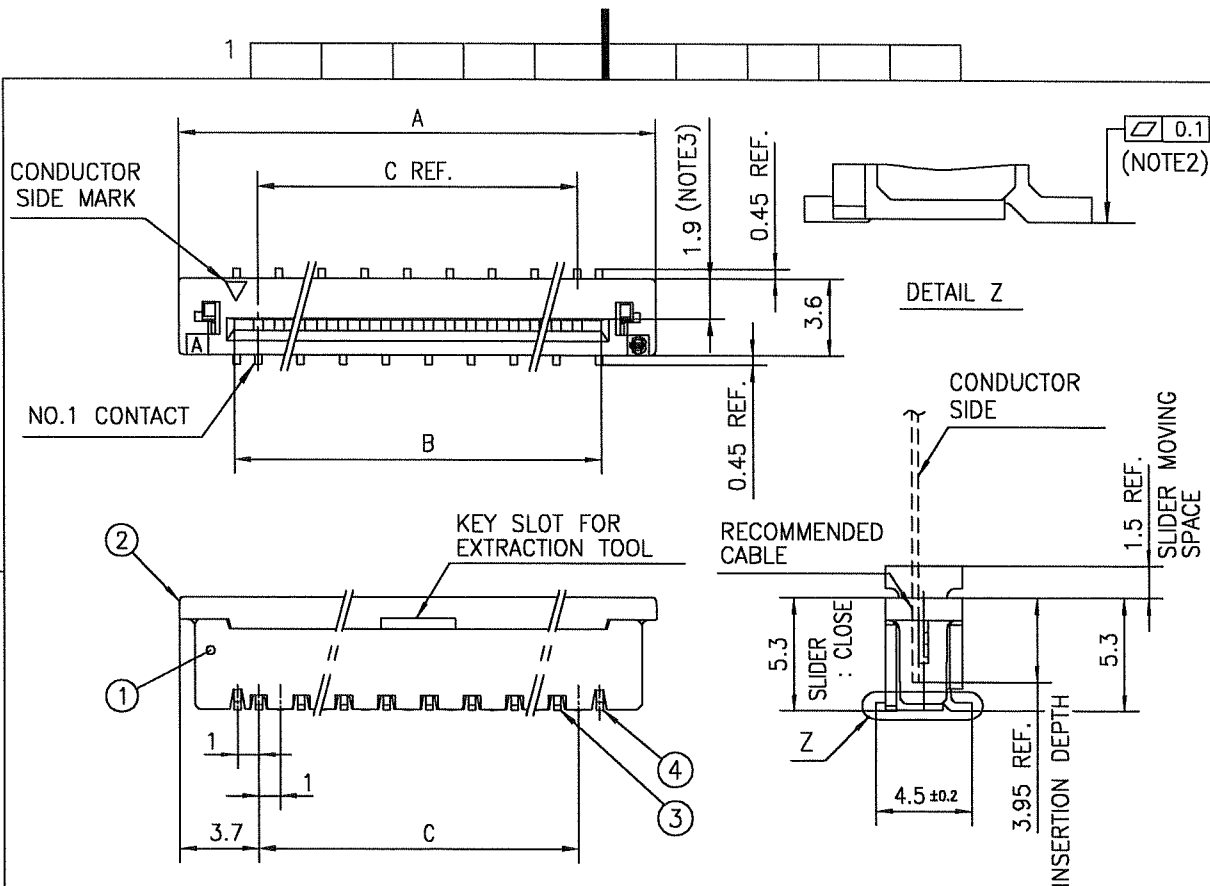
1. THIS PRODUCT IS THE CONNECTOR DESIGNED TO TERMINATE FPC/FFC AND CYPES WITH AUTOMATIC MOUNTING (SMT).
2. FLATNESS OF CONTACT TERMINAL MUST BE WITHIN TOLERANCE IN Z PORTION DETAILED DRAWING.
3. THIS DIMENSION IS SPACE FOR THE NOZZLE OF MOUNTER.
4. THIS PRODUCT MEETS EUROPEAN UNION DIRECTIVES AND OTHER COUNTRY REGULATIONS AS DESCRIBED IN GS-22-008
5. THE HOUSING WILL WITHSTAND EXPOSURE TO 260°C PEAK TEMPERATURE FOR 10 SECONDS IN A REFLOW SOLDERING OVEN.

RECOMMENDED PC BOARD LAYOUT (COMPONENT SIDE)



mat'l. code				surface 58 ISO 1302		tolerance ISO 406 ISO 1101		projection 		product family 58SF				CODE JP	
ltr		ecn no		dr		date		tolerances unless otherwise specified				title			
A		J05-0377		H.T		6/22/05		angles		linear		±0.2		mm	
B		J05-0731		H.T		10/28/05								mm	
C		J06-0430		H.T		10/19/06								scale X	
								dr		10/19/06		sheet 1 of 1		size	
								enrg		10/19/06		JSA 96517		A4	
								chr		10/19/06					
								appd		10/20/06					
sheet index		revision		C		1								Rev c	

SC-SFWS 03 JSA96516
form: A4



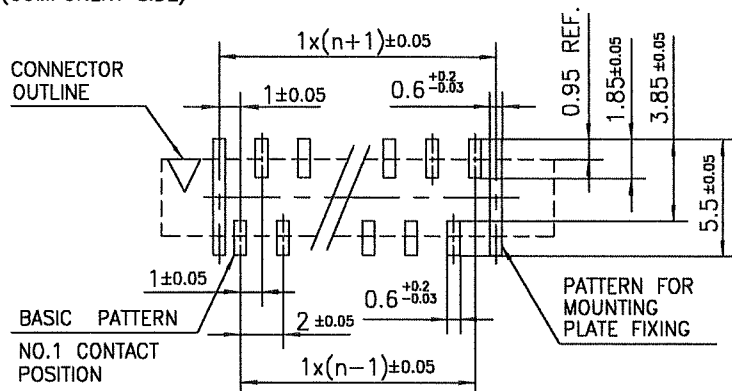
PT. NO.	PARTS NAME	MATERIAL	Q'TY	NOTE
1	HOUSING	GLASS FILLED THERMOPLASTIC RATED. (UL94V-0)	1	COLOR : BROWN
2	SLIDER		1	COLOR : BLACK
3	CONTACT	PHOSPHOR BRONZE	n	PLATING : TIN Ni UNDER PLATED(LEAD FREE)
4	MOUNTING PLATE	BRASS	2	

n : NO. OF CONTACTS

NOTES

1. THIS PRODUCT IS THE CONNECTOR DESIGNED TO TERMINATE FPC/FFC AND COPS WITH AUTOMATIC MOUNTING (SMT).
2. FLATNESS OF CONTACT TERMINAL AND MOUNTING PLATE MUST BE WITHIN TOLERANCE IN Z PORTION DETAILED DRAWING.
3. THIS DIMENSION IS SPACE FOR THE NOZZLE OF MOUNTER.
4. THIS PRODUCT MEETS EUROPEAN UNION DIRECTIVES AND OTHER COUNTRY REGULATIONS AS DESCRIBED IN GS-22-008
5. THE HOUSING WILL WITHSTAND EXPOSURE TO 260°C PEAK TEMPERATURE FOR 10 SECONDS IN A REFLOW SOLDERING OVEN.

RECOMMENDED PC BOARD LAYOUT (COMPONENT SIDE)



mat'l. code				surface 58	tolerance	projection	product family	58SF	CODE
				ISO 1302	ISO 406				JP
				tolerances unless otherwise specified					
ltr	ecn no	dr	date	angles	linear	mm	title		
A	J05-0377	H.T	6/22/05				1mm SPACING SURFACE MOUNT		
B	J05-0731	H.T	10/28/05				FPC/FFC CONNECTOR		
C	J06-0430	H.T	10/19/06				(CAT.No.SFW__S-2STM__LF)		
				dr	10/19/06	FCI	dwg no		sheet 1 of 1
				enr	10/19/06		JSA 96518		size
				chr	10/19/06				A4
				appd	10/20/06		type		Product Customer Drawing
sheet	revision	C							Rev.
index	sheet	1							C

SC-SFWS 03 JSA96516
form: A4

CAT. NO. & DIMENSIONS

(NOTE4)	NO. OF CONTACTS (n)	CAT. NO. (NOTE2)	DIMENSIONS (NOTE3)		
			D ± 5	E ± 0.3	F ± 0.1
	4	SFW4S-2ST_E1LF	28.4	24	—
	5	SFW5S-2ST_E1LF	28.4	24	—
	6	SFW6S-2ST_E1LF	28.4	24	—
*	7	SFW7S-2ST_E1LF	28.4	24	—
	8	SFW8S-2ST_E1LF	28.4	24	—
*	9	SFW9S-2ST_E1LF	28.4	24	—
	10	SFW10S-2ST_E1LF	28.4	24	—
	11	SFW11S-2ST_E1LF	28.4	24	—
*	12	SFW12S-2ST_E1LF	36.4	32	28.4
	13	SFW13S-2ST_E1LF	36.4	32	28.4
	14	SFW14S-2ST_E1LF	36.4	32	28.4
	15	SFW15S-2ST_E1LF	36.4	32	28.4
	16	SFW16S-2ST_E1LF	48.4	44	40.4
	17	SFW17S-2ST_E1LF	48.4	44	40.4
*	18	SFW18S-2ST_E1LF	48.4	44	40.4
*	19	SFW19S-2ST_E1LF	48.4	44	40.4
	20	SFW20S-2ST_E1LF	48.4	44	40.4
*	21	SFW21S-2ST_E1LF	48.4	44	40.4
	22	SFW22S-2ST_E1LF	48.4	44	40.4
	23	SFW23S-2ST_E1LF	48.4	44	40.4
	24	SFW24S-2ST_E1LF	48.4	44	40.4
*	25	SFW25S-2ST_E1LF	48.4	44	40.4
	26	SFW26S-2ST_E1LF	48.4	44	40.4
*	27	SFW27S-2ST_E1LF	60.4	56	52.4
	28	SFW28S-2ST_E1LF	60.4	56	52.4
	29	SFW29S-2ST_E1LF	60.4	56	52.4
	30	SFW30S-2ST_E1LF	60.4	56	52.4
*	31	SFW31S-2ST_E1LF	60.4	56	52.4
*	32	SFW32S-2ST_E1LF	60.4	56	52.4

CAT. NO. SFW (n) S - 2 ST_ _ _ LF

SERIES

NO. OF CONTACTS

STRAIGHT TYPE

FOR FPC / FFC

VARIATION

STM:FOR AUTOMATIC MOUNTING (SMT) WITH MOUNTING PLATE

ST:FOR AUTOMATIC MOUNTING (SMT) WITHOUT MOUNTING PLATE

PACKAGE STYLE

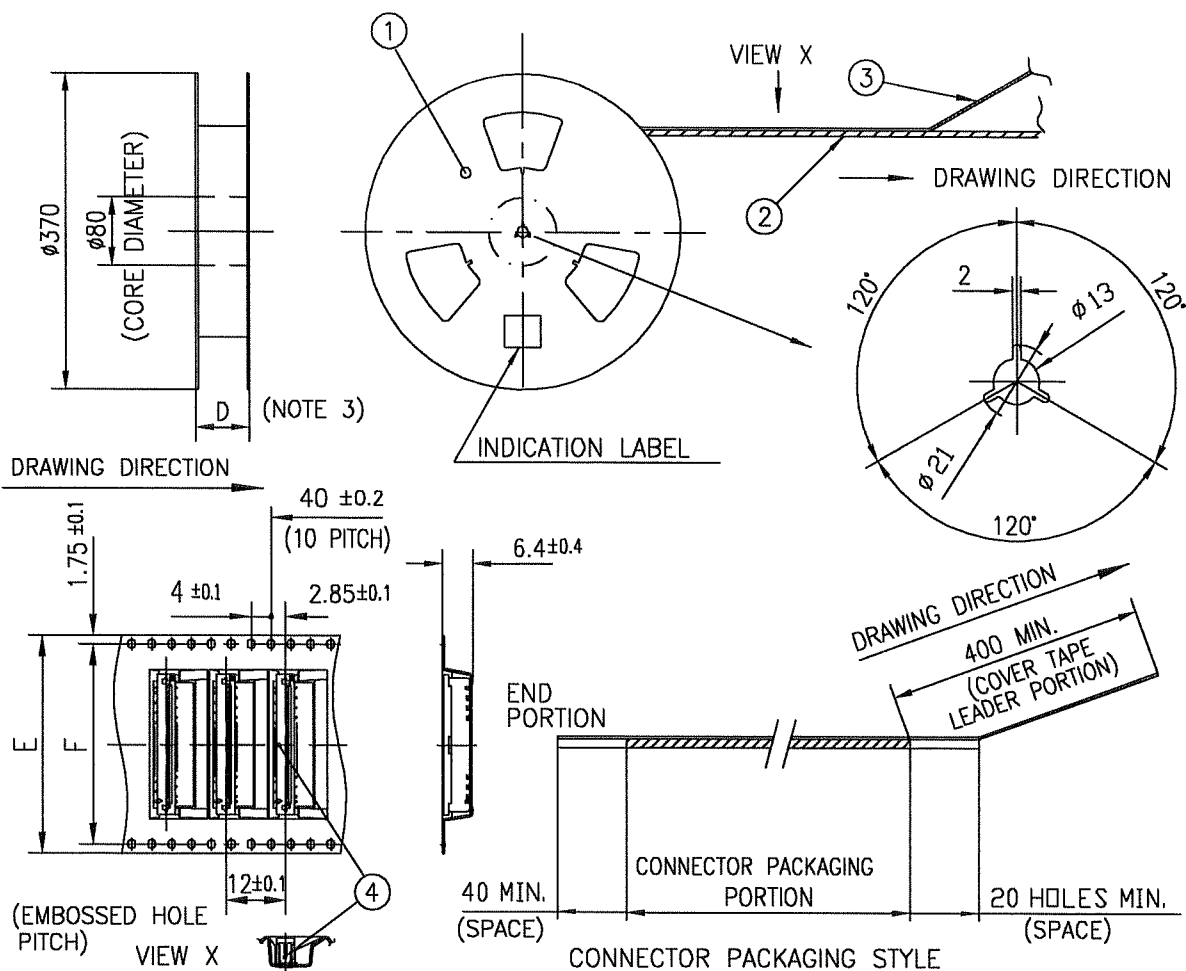
LEAD FREE

NOTES

- THIS PRODUCT IS THE CONNECTOR DESIGNED TO TERMINATE FPC/FFC AND COTES WITH AUTOMATIC MOUNTING (SMT).
- THIS CATALOG NO. INDICATES PLASTIC TAPE PACKAGED CONNECTOR.
- SEE PART DRAWINGS FOR DIMENSIONS D~F.
- PLEASE CONSULT US IN CASE OF USING PARTS WITH * MARK.

mat'l. code				surface 58 / tolerance ISO 1302 ✓ ISO 406 ISO 1101		projection		product family 58SF		CODE JP	
ltr	ecn no	dr	date	tolerances unless otherwise specified		mm		title			
A	J05-0377	H.T	2005-6-22	angles		linear		CAT NO. TABLE FOR PLASTIC TAPE PACKAGED 1mm SPACING SMT CONN. (CAT.No.SFW__S-2ST_E1LF)			
B	J05-0547	H.T	2005-8-30					dwg no sheet 1 of 1 size			
C	J06-0430	H.T	2006-10-19					JSA 96519 A4			
D	J07-0407	H.T	2007-8-9	dr		engr		type Product Customer Drawing			
				chr		appd					
sheet index	revision	D	1					Rev. D			

SC-SFWS 03 JSA96516 96520
form: A4



PT. NO.	PARTS NAME	CAT. NO.	MATERIAL	Q'TY	NOTE
1	REEL	_____	CARDBOARD	1	COLOR:GRAY
2	PLASTIC (EMBOSSSED) TAPE	_____	PET	_____	COLOR:TRANSPARENCY
3	COVER	_____	POLYESTER	_____	COLOR:TRANSPARENCY
4	CONNECTOR	SFW__S-2ST__LF	SEE ATTACHED DWG.	1000	_____

NOTES

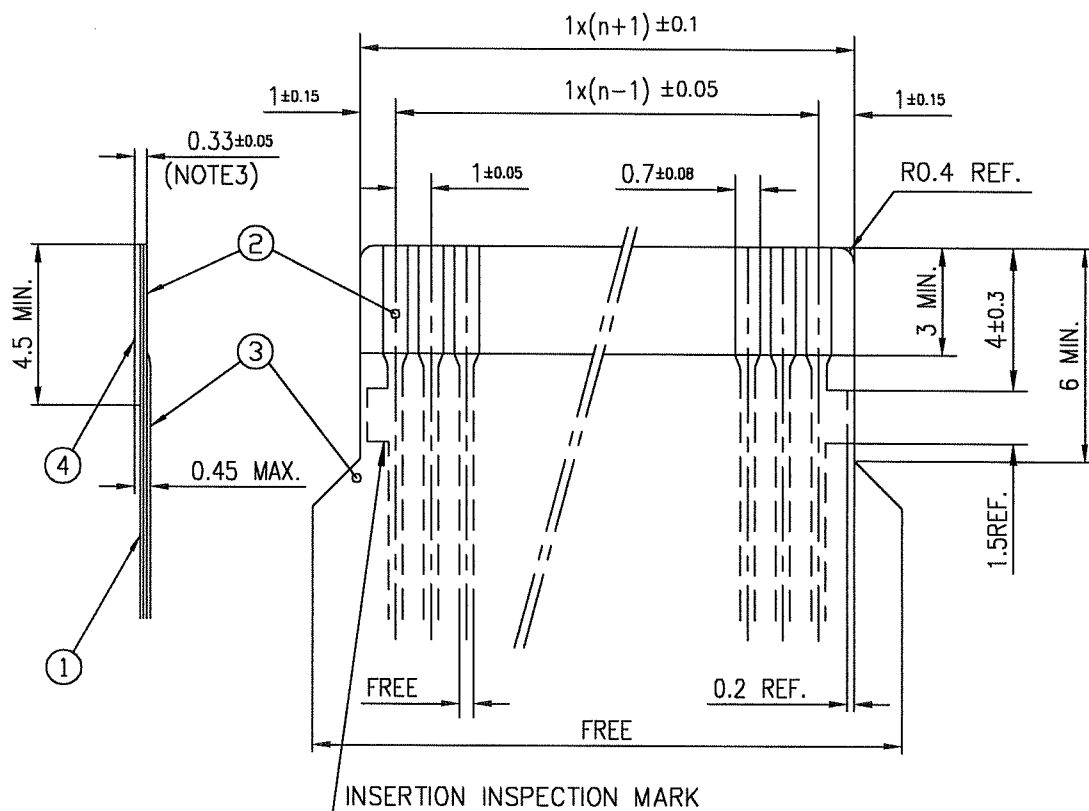
- THIS IS PLASTIC TAPE PACKAGED CONNECTOR USED FOR FPC/FFC AND CYPES WITH AUTOMATIC MOUNTING (SMT).
- SEE JIS C 0806 (PACKING OF ELECTRONIC COMPONENTS ON CONTINUOUS TAPES (SURFACE MOUNTING DEVICES)) FOR SHAPE AND DIMENSIONS OF PLASTIC (EMBOSSSED) TAPE AND REEL.
- F DIMENSION IS PORTION OF THE CORE.

mat'l. code				surface 58	tolerance	projection	product family	CODE
				ISO 1302	ISO 406	ISO 1101	58SF	JP
ltr	ecn no	dr	date	tolerances unless otherwise specified		mm	title PLASTIC TAPE PACKAGED 1mm SPACING SMT CONNECTOR (CATA.No.SFW__S-2ST_E1LF)	
A	J05-0377	H.T	6/22/05	angles	linear	±5		
B	J06-0430	H.T	10/19/06	±5°		scale X	dwg no	
				dr	engr		sheet 1 of 1	size
				chr	appd		JSA 96520	A4
sheet	revision	B					type Product Customer Drawing	
index	sheet	1						Rev
								B

SC-SFWS 03 JSA96519
form: A4

RECOMMENDED CABLE (FPC)

n : NO. OF CONDUCTORS



PT. NO.	DESCRIPTION	MATERIAL	THICKNESS (μm)
1	BASE FILM	POLYIMIDE OR POLYESTER OR EQUIVALENT	25
2	CONDUCTOR	COPPER FOIL(PLATING : SOLDER $1\mu\text{m}$ MIN.)	35
3	OVERLAY	POLYIMIDE OR POLYESTER OR EQUIVALENT	—
4	SUPPORTING TAPE	POLYESTER OR POLYIMIDE OR EQUIVALENT	188

NOTES

1. NO BURR AT EACH PORTION.
2. NO PEELING IN COMMON USE.
3. TOTAL THICKNESS LIMIT OF EACH MATERIAL (INCLUDING ADHESIVE AGENT) IS SPECIFIED.

mat'l. code				surface 58 / tolerance ISO 406 / ISO 1101		projection		product family 58SF		CODE JP	
ltr	ecn no	dr	date	tolerances unless otherwise specified		mm		title			
AA	J04-0333	H.T	Oct.13/04					RECOMMENDED CABLE			
AB	J06-0430	H.T	10/19/06					(CAT.No.SFW__S-2ST__)			
				angles linear		scale X		dwg no sheet 1 of 1 size			
						FCI		JSA 93340 A4			
				dr 10/19/06				type Product Customer Drawing			
				enr 10/19/06							
				chr 10/19/06							
				appd 10/20/06							
sheet index	revision sheet	AB	1					Rev. AB			

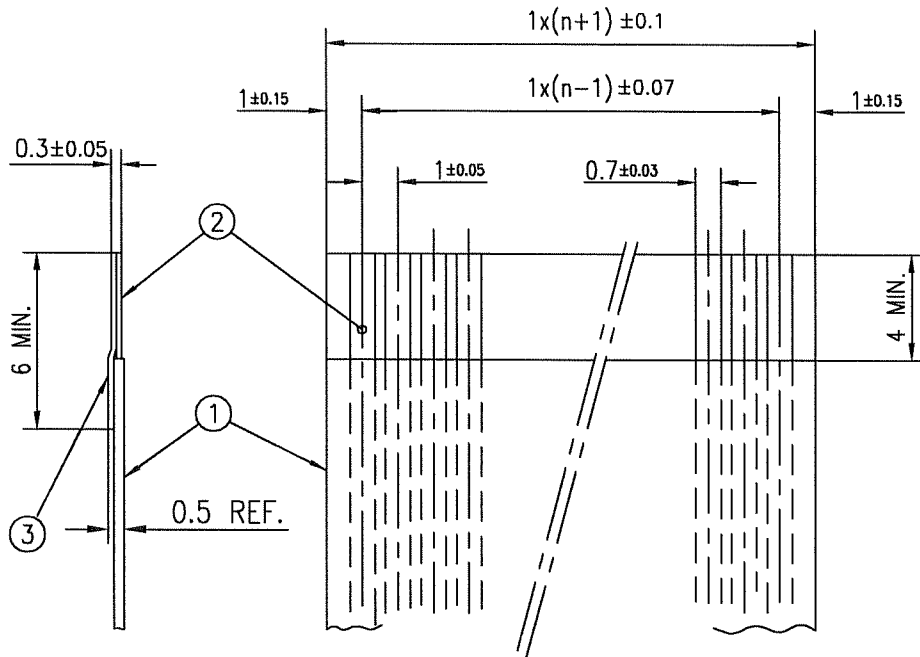
form: A4

1

2

RECOMMENDED CABLE (FFC)

n : NO. OF CONDUCTORS



PT. NO.	DESCRIPTION	MATERIAL	NOTE
1	INSULATOR	FLAME RESISTING POLYESTER OR EQUIVALENT	_____
2	CONDUCTOR	COPPER FOIL	PLATING: TIN OR SOLDER 1μm MIN.
3	SUPPORTING TAPE	FLAME RESISTING POLYESTER OR EQUIVALENT	_____

NOTES

1. NO BURR AT EACH PORTION.
2. NO PEELING IN COMMON USE.

mat'l. code				surface 5B / tolerance ISO 406 / ISO 1302 ✓ / ISO 1101		projection		product family 58SF		CODE JP	
ltr	ecn no	dr	date	tolerances unless otherwise specified		mm		title			
AA	J04-0333	H.T	06.13.04	angles linear		mm		RECOMMENDED CABLE (CAT.No.SFW__S-2ST__)			
AB	J06-0430	H.T	10/19/06			scale X		dwg no sheet 1 of 1 size			
				dr		FCI		JSA 93341 A4			
				engr				type Product Customer Drawing			
				chr							
				appd							
sheet index	revision	AB						Rev. AB			

form: A4

1

2

Mouser Electronics

Authorized Distributor

Click to View Pricing, Inventory, Delivery & Lifecycle Information:

[FCI / Amphenol:](#)

[SFW14S-2STME9LF](#) [SFW16S-2STME9LF](#) [SFW16R-2STE5LF](#) [SFW6S-6STE1LF](#) [SFW27R-4STAE5LF](#)