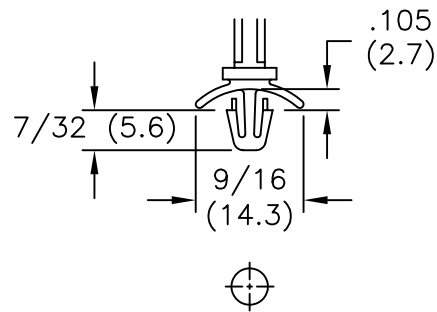
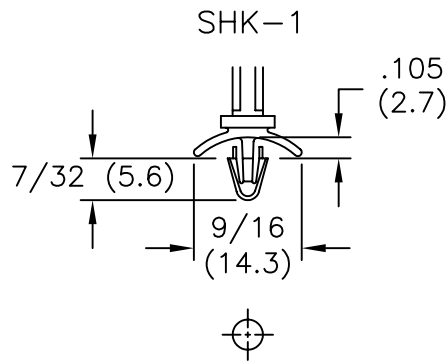


TO SNAP-LOCK IN
INDICATED DIA. HOLES
AND PANEL THICKNESS



.187 (4.75) DIA. HOLE
1/16 (1.6) NOM.
BD. THICKNESS

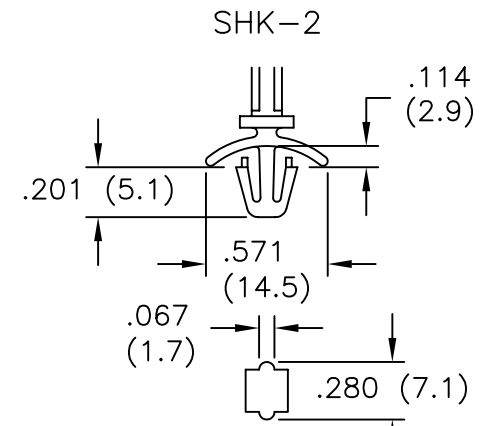


.156 (3.96) DIA. HOLE
1/16 (1.6) NOM.
BD. THICKNESS



PART NO.			DIM. "A"
SHK-6	SHK-1-6	SHK-2-6	3/8 (9.5)
SHK-8	SHK-1-8	SHK-2-8	1/2 (12.7)
SHK-12	SHK-1-12	SHK-2-12	3/4 (19.1)
SHK-16	SHK-1-16	SHK-2-16	1 (25.4)
SHK-20	SHK-1-20	SHK-2-20	1-1/4 (31.8)

NOTES:

- MAT'L: NYLON 66 (RMS-01), NATURAL
- AVAILABLE IN FLAME RETARDANT NYLON (RMS-19) BY REQUEST



.217 (5.5) SQ. HOLE
1/16 (1.6) NOM.
PANEL THICKNESS

G	CHANGED FILE NO.	SM 10.25.02	TITLE: STAND-OFF HARNESS CLIP					DWG IN	
F	-2 ARROW HD TIP MODIFIED (TOOLING)	AM 4/12/99							
E	DIM CORRECTED .28(7.1) WAS .30(7.1)	J.L. 12.18.97	TOLERANCES UNLESS NOTED .XX=±.010 .XXX=±.005 FRAC=±1/64 ANG=±1°	FILE # SHK	DWN: P.B.	APP:	FINAL		
D	DIM CORRECTED .71 REF. WAS .54	J.L. 12.17.97		MAT'L: SEE NOTES	DT: 05-12-94	DT:	PART # SEE TABLE	PRINT TYPE CA	
C	PART NO'S SHK-X-6 WERE SHK-X-3	PB 03.07.95		RE: RICHCO, INC.	RICHCO INC. PO BOX 804238,CHICAGO,60680 (773) 539-4060				
B	DIM "TO SNAP-LOCK IN INDICATED ..." ADDED	PB 10.25.94							
A	SHK-3 REMOVED	PB 08.16.94							
REV	DESCRIPTION	ENGR DATE							