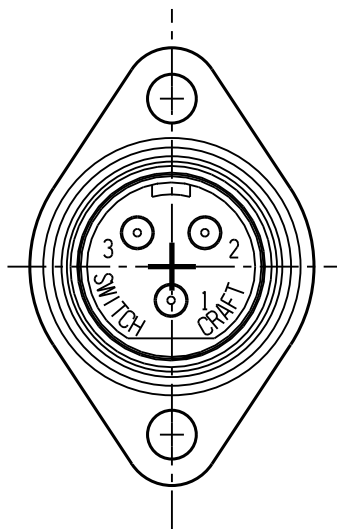
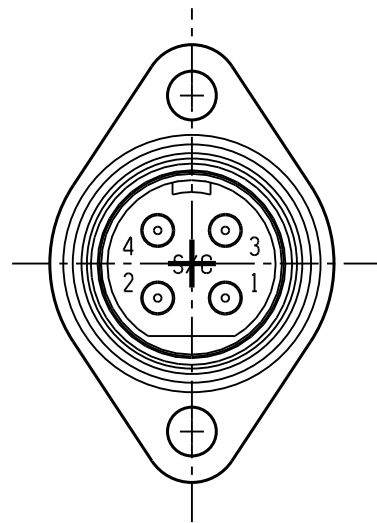


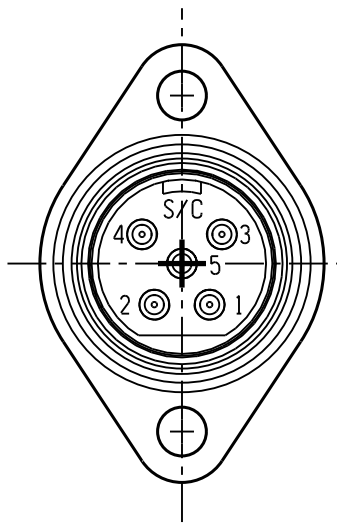
SL102M



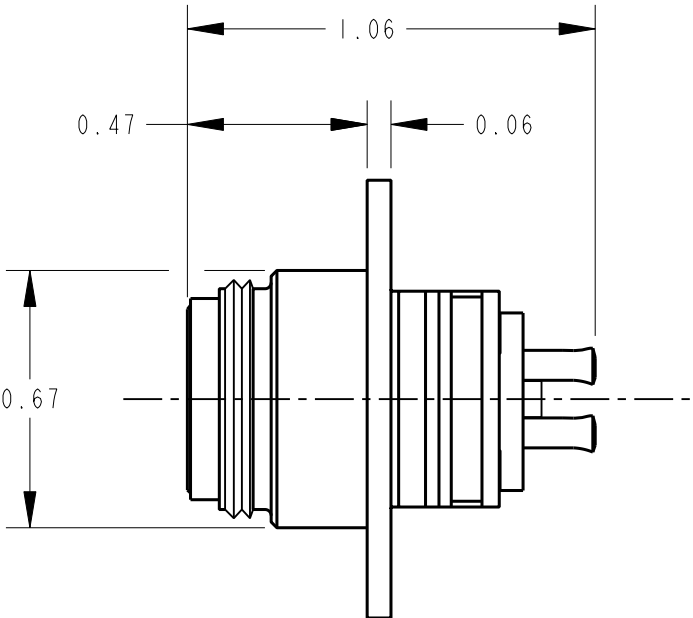
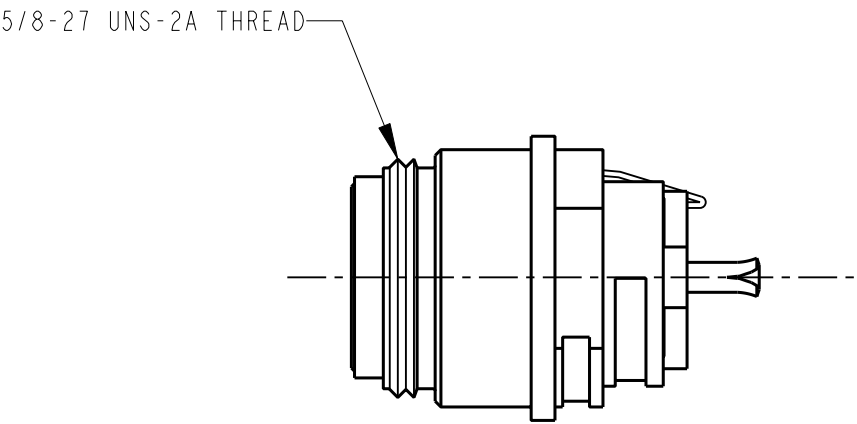
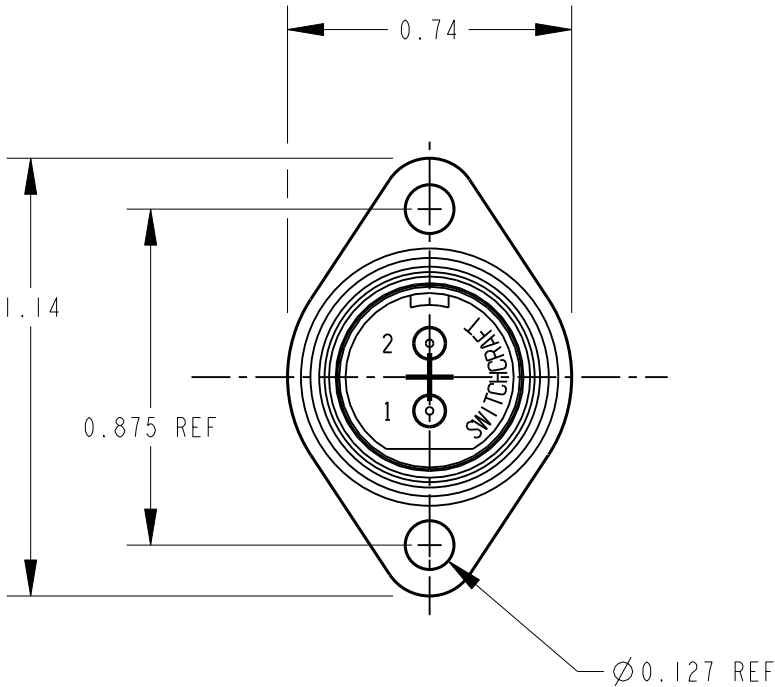
SL103M



SL104M



SL105M



CUSTOMER DRAWING

- NOTES:
- HOUSING AND PIN ASSEMBLY SHIPPED UNASSEMBLED.
 - MATERIALS:
HOUSING - DIE CAST, NICKEL PLATED
INSERT - GLASS REINFORCED THERMOPLASTIC, BLACK
PINS - COPPER ALLOY, SILVER PLATED
LATCH - STEEL, NICKEL PLATED
 - THESE PRODUCTS ARE RoHS COMPLIANT.

					★ STAR SYMBOL DENOTES CRITICAL DIMENSION	THIS DRAWING DESCRIBES A DESIGN CONSIDERED PROPRIETARY IN NATURE, DEVELOPED AND MANUFACTURED BY SWITCHCRAFT INC. AND IS RELEASED ON A CONFIDENTIAL BASIS FOR IDENTIFICATION PURPOSES ONLY.				
					UNLESS OTHERWISE SPECIFIED	SIZE	WIDTH	MULT	LBS/M	TEMPER
					1. ALL DIMENSIONS IN INCHES - TWO PLACE DECIMALS ±0.01 - THREE PLACE DECIMALS ±0.005 - ANGLES ±1° - ALL DIA. CONCENTRIC WITHIN 0.005 T.I.R.	FINISH SPEC No.		MATERIAL SPEC No.		
					2. FEATURES ON THE SAME CENTERLINE MUST BE ALIGNED WITHIN ±0.002	FIRST USED ON		SCALE DRAWING SCALE		Switchcraft®
					3. REMOVE ALL BURRS	DATE DRAWN	BY	CHKD	APVD	
F	21506	1-10-11	TJK	TJK		30-Nov-06	TJK	TJK 11-30-06	TJK 2-3-10	SHEET 1 OF 1
REV	ECO NUMBER	DATE	BY	APVD	NAME		PART No.		REV	
REVISIONS					DO NOT SCALE DRAWING		SLIM-LINE MALE FLANGE MOUNT CONNECTOR		SL10_M SERIES	

Mouser Electronics

Authorized Distributor

Click to View Pricing, Inventory, Delivery & Lifecycle Information:

Switchcraft:

[SL105M](#) [SL104M](#) [SL102M](#) [SL103M](#)