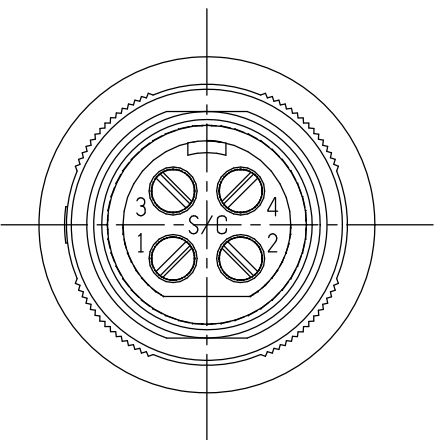
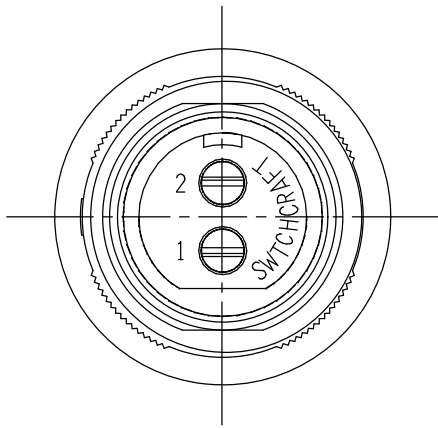


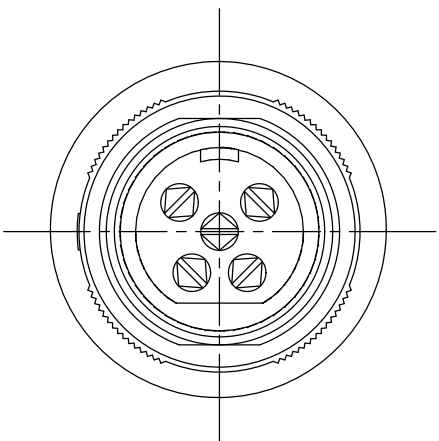
SL183FX



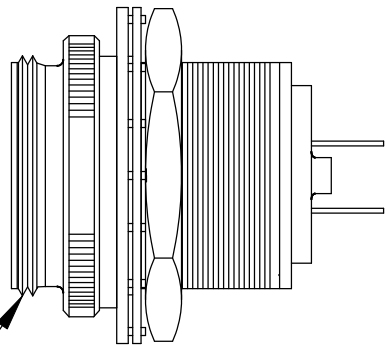
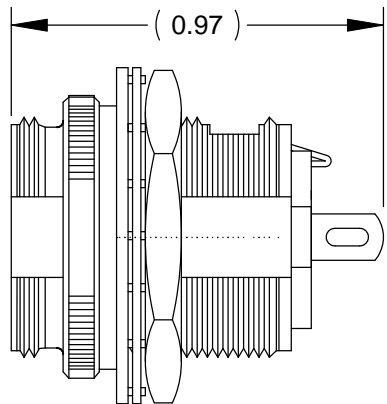
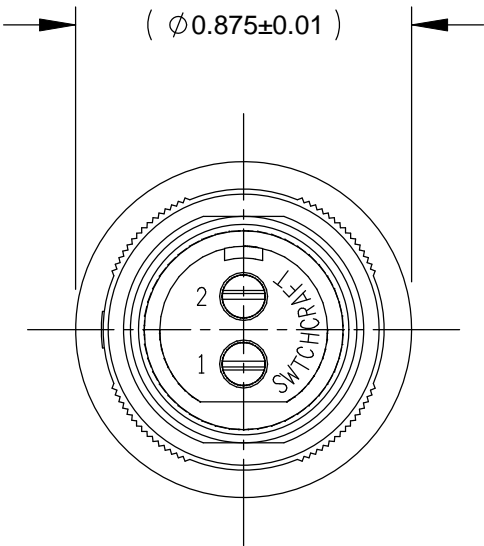
SL184FX



SL182FX



SL185FX



5/8-27 UNC- 2A THREAD  
BOTH ENDS REF

CUSTOMER DRAWING

- NOTES:
- 1. HOUSING AND PIN ASSEMBLY SHIPPED UNASSEMBLED
  - 2. HEX NUT AND WASHERS SHIPPED UNASSEMBLED
  - 3. THESE PRODUCTS ARE RoHS COMPLIANT

					☆ STAR SYMBOL DENOTES CRITICAL DIMENSION	THIS DRAWING DESCRIBES A DESIGN CONSIDERED PROPRIETARY IN NATURE, DEVELOPED AND MANUFACTURED BY SWITCHCRAFT INC. AND IS RELEASED ON A CONFIDENTIAL BASIS FOR IDENTIFICATION PURPOSES ONLY.										
					UNLESS OTHERWISE SPECIFIED 1. ALL DIMENSIONS IN INCHES - TWO PLACE DECIMALS ±0.01 - THREE PLACE DECIMALS ±0.005 - ANGLES ±1° - ALL DIA. CONCENTRIC WITHIN 0.005 T.I.R.  2. FEATURES ON THE SAME CENTERLINE MUST BE ALIGNED WITHIN ±0.002  3. REMOVE ALL BURRS	SIZE	WIDTH		MULT		LBS/M		TEMPER			
						FINISH					MATERIAL					
						SPEC No.					SPEC No.					
						FIRST USED ON			SCALE			Switchcraft®				
									1:1							
						DATE DRAWN	BY	CHKD		APVD						
A	26150	11-30-06	SRC	SRC	11-30-06	SRC	SRC		SRC							
							11-30-06		11-30-06		SHEET 1 OF 1					
REV	ECO NUMBER	DATE	BY	APVD		NAME					PART No.					REV
REVISIONS					DO NOT SCALE DRAWING	SLIM-LINE FEMALE FRONT PANEL MOUNT RECEPTACLE, RoHS					SL18_FX SERIES					A

# Mouser Electronics

Authorized Distributor

Click to View Pricing, Inventory, Delivery & Lifecycle Information:

[Switchcraft:](#)

[SL183F](#)