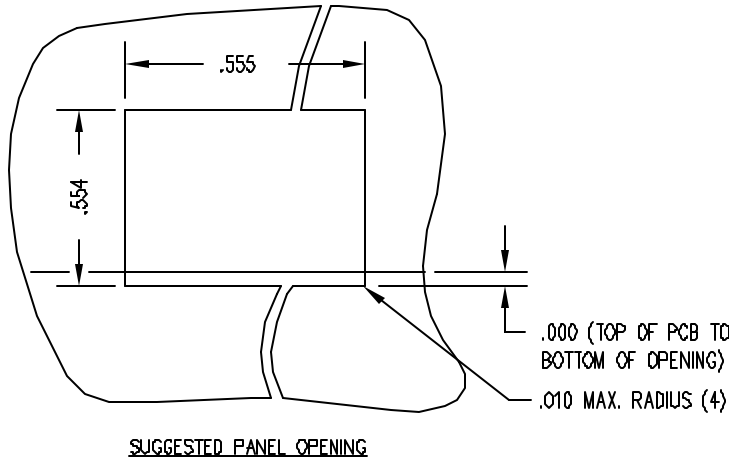
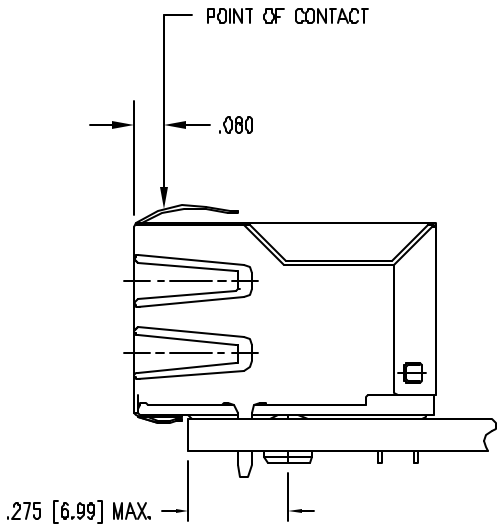
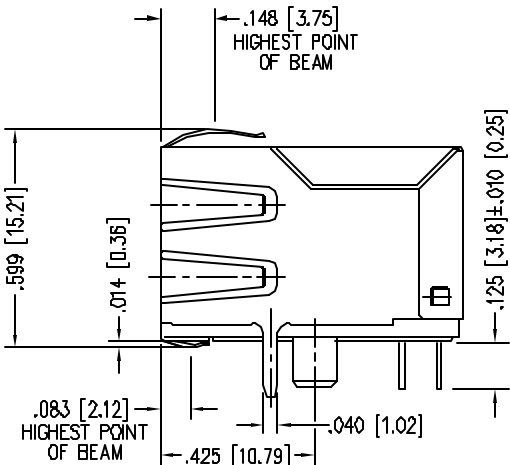
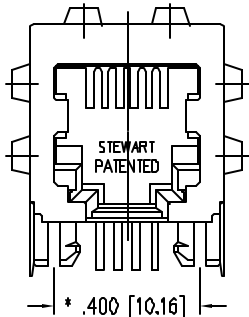
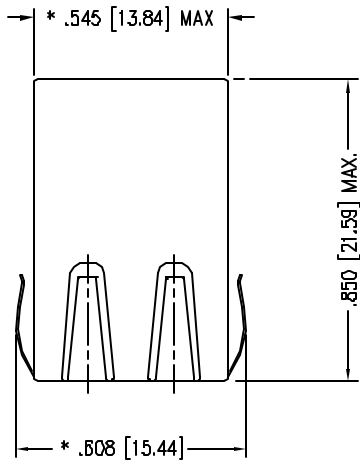


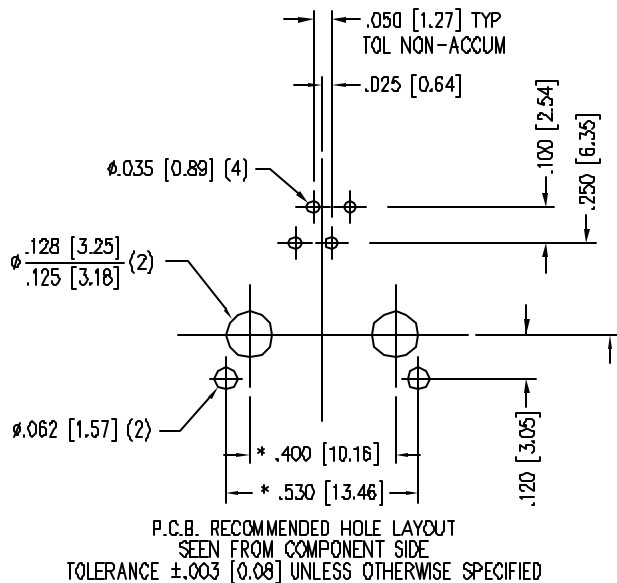
| DATE    | REV | ECN  | APP'D. BY |
|---------|-----|------|-----------|
| 1/30/06 | A1  | 7455 | 1-30-06   |
|         |     |      |           |
|         |     |      |           |
|         |     |      |           |

B



- NOTES:
- CONNECTOR MATERIALS:  
HOUSING: THERMOPLASTIC UL94 V-0  
CONTACTS/SHIELD: COPPER ALLOY  
SHIELD PLATING: NICKEL OR TIN  
CONTACT PLATING: SELECTIVE GOLD IN CONTACT AREA  
SEE CHART FOR PART NUMBER
  - FOR PRODUCT SPECIFICATIONS SEE PRO22-01.
  - TOLERANCES COMPLY WITH F.C.C. DIMENSION REQUIREMENTS.
  - THE SUGGESTED PANEL OPENING IS INTENDED TO GIVE USER THE ABILITY TO HAVE REASONABLE JACK/PANEL CLEARANCES, YET MAINTAIN GROUNDING CAPABILITY. THESE VARIABLES CAN BE ADJUSTED IN EITHER DIRECTION BUT MAY CARRY SOME CONSEQUENCES IN THE FORM OF LOWER MATING FORCES OR TIGHTER ASSEMBLY TOLERANCES.

A



|                                   |                     |
|-----------------------------------|---------------------|
| 30 MICRO-INCHES [0.76um]          | SS-6446S-A-PG4-1-BA |
| CONTACT PLATING<br>IN MATING AREA | PART NUMBER         |

|  |  |  |               |
|--|--|--|---------------|
| THIRD ANGLE PROJECTION   |  |  |               |
| DO NOT SCALE DRAWING<br>DRAWING IS SUBJECT TO<br>CHANGE WITHOUT NOTICE       |  | <h1>Bel Stewart Connector</h1> <p>11118 Susquehanna Trail South<br/>Glen Rock, PA 17327-9199<br/>(717) 235-7512 Fax: (717) 235-7954 <a href="http://www.stewartconnector.com">http://www.stewartconnector.com</a></p>  |               |
| DIMENSIONS: INCHES [METRIC]  |  |  |               |
| UNLESS OTHERWISE SPECIFIED<br>TOLERANCES ARE ±.005 [0.13]<br>ANGLES ARE ± 1° |  | TITLE: EMI-RFI ONE PIECE SHIELDED, ESD GROUNDED, 4 X 6 JACK  |               |
| SHEET NO. 1 OF 1   |  | THIS DRAWING AND THE SUBJECT MATTER SHOWN THEREON ARE CONFIDENTIAL AND THE PROPRIETARY PROPERTY OF BEL STEWART CONNECTOR AND SHALL NOT BE REPRODUCED, COPIED, OR USED IN ANY MANNER WITHOUT PRIOR WRITTEN CONSENT OF BEL STEWART CONNECTOR. THE SUBJECT MATTER MAY BE PATENTED OR A PATENT MAY BE PENDING. |               |
|  |  | DRN BY: KRL  | DATE: 1/30/06 |
|  |  | APPD BY: JM  | DATE: 1-30-06 |
|  |  | DWG NO. CT640194   | REV. A1       |