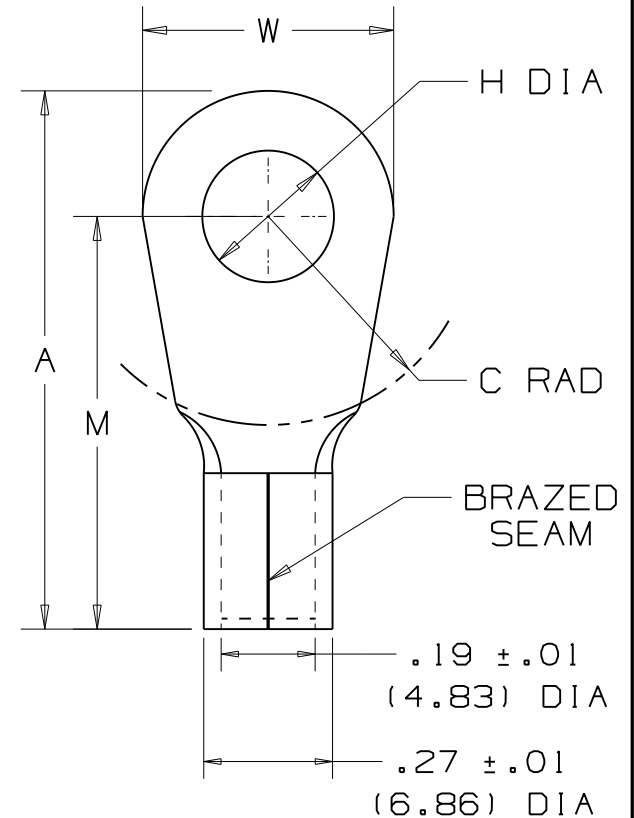
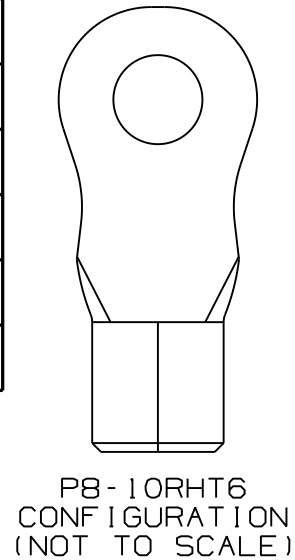


PANDUIT PART NUMBER		STUD SIZE	DIMENSIONS in.				
PREFIX	PK		A $\pm.03$	W $\pm.01$	C $\pm.02$	M $\pm.03$	H $\pm.01$
P8-8RHT6	-0	#8	1.12 (28.45)	.42 (10.67)	.43 (10.92)	.91 (23.11)	.17 (4.32)
P8-8RNHT6	-0	#8	1.09 (27.69)	.36 (9.25)	.43 (10.92)	.91 (23.11)	.17 (4.32)
P8-10RHT6	-0 -T	#10	1.14 (28.96)	.42 (10.67)	.43 (10.92)	.91 (23.11)	.20 (5.08)
P8-10RNHT6	-0 -T	#10	1.09 (27.69)	.36 (9.25)	.43 (10.92)	.91 (23.11)	.20 (5.08)
P8-14RHT6	-0	1/4"	1.14 (28.96)	.47 (11.94)	.43 (10.92)	.91 (23.11)	.27 (6.86)
P8-56RHT6	-0	5/16"	1.25 (31.75)	.59 (14.99)	.51 (12.95)	.95 (24.13)	.33 (8.38)
P8-38RHT6	-0	3/8"	1.25 (31.75)	.59 (14.99)	.51 (12.95)	.95 (24.13)	.39 (9.91)
P8-12RHT6	-0	1/2"	1.36 (34.54)	.82 (20.83)	.54 (13.72)	.95 (24.13)	.52 (13.21)



## NOTES:

- FOR #8 AWG COPPER WIRE
- 650 F (343C) MAX. TEMP RATING
- PACKAGE QTY: STD - Q=25  
BLK - T=200

## 4. MATERIAL:

STAMPING - .040" (1.02) THK COPPER,  
NICKEL PLATED

## 5. DIMENSIONS IN BRACKETS ARE MILLIMETERS

## 6. INSTALLATION TOOL: CT-2600

## 7. WIRE STRIP LENGTH: 3/8 +1/32 -0 (9.5mm +.8 -0)

03	5/09	BCT		MODIFIED P8-10RHT6 DIM W TO 0.42"					
02	1/09			ADDED P8-8RNHT6 & #8-10RNHT6					
01	6/08	SRB		Removed UL & CSA ADDED temp rating Removed ct-2600 tool					
00	6/08	BCT		RELEASED					
REV	DATE	BY	CHK	DESCRIPTION	ECN #	CUST	PM	DRAWN BY BCT	CHK'D SCALE NONE DRAWING NO. A41741

**PANDUIT** CORP.

TINLEY PARK, ILLINOIS

#8 BARREL NON-INSULATED  
HIGH TEMPERATURE RING TONGUE

# Mouser Electronics

Authorized Distributor

Click to View Pricing, Inventory, Delivery & Lifecycle Information:

Panduit:

[P8-8RHT6-Q](#) [P8-56RHT6-Q](#) [P8-10RHT6-Q](#) [P8-12RHT6-Q](#) [P8-10RNHT6-Q](#) [P8-14RHT6-Q](#) [P8-8RNHT6-Q](#) [P8-10RHT6-T](#)